



**JAMIE ZROBACK BBA, Fin**

jamie@landquest.com

604-483-1605

**JASON ZROBACK**

jason@landquest.com

604-414-5577

**www.bclandpro.com**

**www.landquest.com**



**10,980 ACRE BRITISH COLUMBIA REAL ESTATE PORTFOLIO**

- 108 separate titles
- 3.4% ROI
- Commercial lease space
- Residential Development Land
- Resource and Agricultural Land
- 2,060 acre mature cranberry farm
- **\$82,000,000**



**HARDY ISLAND OCEANFRONT WITH CUSTOM HOME & DOCK**

- Completely private, year-round living
- 36 acres with 860 ft of low bank waterfront
- 2,170 ft<sup>2</sup> West Coast style home
- Large wrap-around sundeck
- Tons of outdoor living space
- 40 ft dock, protected deep water moorage
- **\$1,250,000**



**EAGLE NOOK RESORT - BROKEN ISLANDS, BARKLEY SOUND, BC**

- Fully equipped fishing lodge located on west coast of Vancouver Island
- Includes 23 room, 17,500 ft<sup>2</sup> main lodge,
- 2 log cabins and marina
- 70 acres of land, 2 miles of oceanfront
- **\$5,495,000**



**10.1 ACRE OCEANFRONT KELLY ISLAND - BLIND BAY, BC**

- 1,325 ft of west facing waterfront
- Zoned for 2 homes
- Septic system and shared dock
- Located at south end of Blind Bay in between Nelson and Hardy Islands
- Easily accessible
- **\$249,000**



**SHOAL BAY OCEANFRONT HOME WITH ACREAGE AND DOCK**

- 12+ acres with roughly 600 ft of oceanfront
- Minutes from premier salmon fishing grounds
- 2,500 ft<sup>2</sup> 3 bedroom, 3 bathroom home
- Private dock, 20 x 40 ft workshop
- **\$449,000**



**9.98 ACRE OCEANFRONT IN VON DONOP INLET - CORTES ISLAND**

- Water access only recreational property
- Easily accessed from Cortes Island, Quadra Island or Campbell River
- Within Ha'thayim Provincial Marine Park
- Many potential building sites
- **\$159,000**



**10.3 ACRE OCEANFRONT WITH DOCK SALT SPRING ISLAND, BC**

- Stunning water access only property
- 1,100 ft frontage in Sansum Narrows
- Mins by boat from Maple Bay or Genoa Bay
- Includes 50 ft dock, ramp, 2 wells and small starter cabin
- **\$575,000**



**GREEN POINT OCEANFRONT CABIN CORDERO CHANNEL**

- Affordable 700 ft<sup>2</sup> cabin
- Fantastic location near Blind Channel, Shoal Bay and Phillips Arm
- A great opportunity with upside potential by finishing the cabin
- **\$124,900**



**WEST COAST AFFORDABLE LOW BANK OCEANFRONT ACREAGE**

- 5± acre waterfront lot
- Minutes from Ucluelet
- SW facing waterfront / extensive frontage
- Ideal investment and recreation property
- Affordable, water access only on the door step to some of BC's best fishing
- **\$129,900**



**OCEANFRONT ACREAGE, BICKLEY BAY - EAST THURLOW ISLAND, BC**

- 261 acres (2 titles) fronting Cordero Channel
- Includes some mature forest & previously logged area; was reforested 10+ years ago
- Good moorage area on inside of the bay
- Fresh water runs through property from 2 creek sources; cleared, level area at the point suitable for home site
- **\$750,000**



**1,307 ACRE OCEANFRONT INVESTMENT OPPORTUNITY**

- 1,300 acres, impressive 6.48 km oceanfront
- 3 titles of land - 2 foreshore licences
- RU2 Zoning - 10 acre min parcel sizes
- Significant timber component
- Next door to world-famous Malibu Rapids and Princess Louisa Inlet
- **\$3,600,000**



**THE ULTIMATE FLY-IN CABIN FROGPOND LAKE**

- Private, secluded on crystal clear Frogpond Lake
- Located 1,600 ft up on Goat Island in the middle of Powell Lake
- World class trout fishing
- Includes main cabin, guest cabin, shop, 3 boats & all the comforts of home
- **\$199,000**



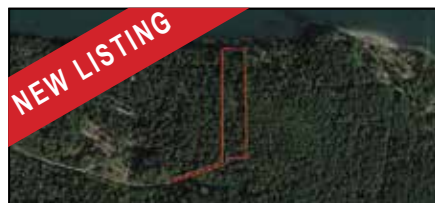
**111 ACRES LUND, BC**

- Right in Village Centre
- Comprehensive development opportunity
- Access to community water and sewer
- Mature forest
- Highway access
- **\$1,495,000**



**OCEANFRONT ESTATE SIZED ACREAGE - POWELL RIVER, BC**

- 13.83 acres and 354 ft S facing oceanfront home on 1/4 acre
- Landscaped with 2 building sites
- Drilled well and underground services
- Highway access and security entry gate
- Borders Saltery Bay Provincial Park
- Potential for private deep water moorage
- **\$699,000**



**PRIVATE OCEANFRONT ACREAGE NORTH PENDER ISLAND, BC**

- 3.53 acres of private residential oceanfront on North Pender Island
- 180± ft frontage
- Private driveway leads to prepared building site with drilled well
- Come build your dream home today!
- **\$289,000**



**CHERRY POINT ESTATES WINES COBBLE HILL, BC**

- Well-established, award winning 34 acre vineyard
- 3,927 ft<sup>2</sup> home, commercial kitchen, 90 seat bistro with liquor licence, wine shop
- Event pavilion, warehouse, processing facility and equipment
- **\$5,500,000**



**LOT 8 OKEOVER MARINA ESTATES OKEOVER INLET**

- 0.3 acre low bank oceanfront
- Southern exposed road access
- Year-round creek, fruit trees on property
- Bordering Lot 9 could be purchased adding to this excellent holding
- **\$174,000**



**OCEANFRONT HOME QUEEN CHARLOTTE CITY**

- Low bank 4 bedroom, 2,400 ft<sup>2</sup> two storey home on 1/4 acre
- Amazing views and beautiful sunsets!
- 3 bedrooms up, 1 bedroom down
- 2 bathrooms, rec room, office / den, hardwood floors, wood heat, large sundeck
- **\$279,000**



**13.51 ACRE OCEANFRONT WITH 1+ ACRE MARINA - LUND, BC**

- Oceanfront acreage with small commercial marina within Lund Harbour
- Licensed seafood processing facility
- Large owner's residence, multiple rental homes and RV park
- One of BC's most sought-after destinations
- **\$2,500,000**



**PRISTINE 19.6 ACRE OCEANFRONT SAWMILL BAY, NELSON ISLAND, BC**

- Completely forested, 2,000 ft frontage
- Includes protected bay with deep water moorage potential
- 10 minute boat ride from Egmont
- Zoning allows for 3 homes and 1 auxiliary dwelling with subdivision potential
- **\$350,000**